



# GAT MONTHLY MEMBERSHIP PROGRESS REPORT

Results as of: 1/31/2023

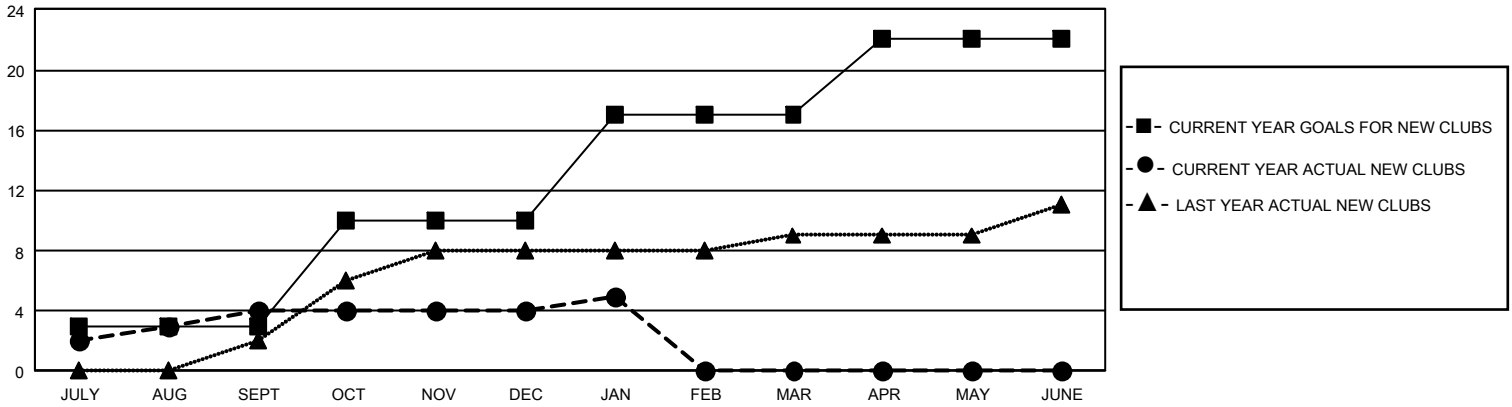
## GMT Constitutional Area 2, Group B

REPORT DOES NOT INCLUDE CLUBS IN UNDISTRICTED AREAS.

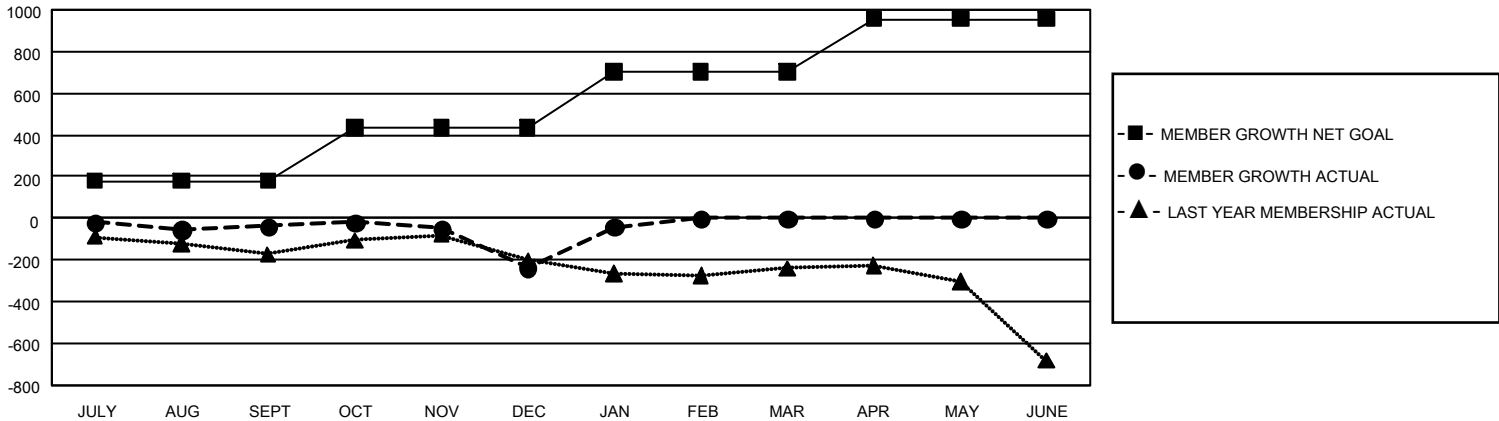
Clubs			
RESULTS FOR 2022-2023			
QUARTER	NEW CLUB GOAL	NEW CLUBS	DROPPED CLUBS
JULY/AUG/SEPT	9	4	4
OCT/NOV/DEC	21	0	6
JAN/FEB/MAR	21	1	1
APR/MAY/JUNE	15	0	0

Members			
RESULTS FOR 2022-2023			
QUARTER	MEMBER GROWTH NET GOAL	MEMBER GROWTH ACTUAL	DROPPED MEMBERS ACTUAL (including transfers)
JULY/AUG/SEPT	180	424	403
OCT/NOV/DEC	255	610	744
JAN/FEB/MAR	270	379	154
APR/MAY/JUNE	250	0	0

GOALS AND ACTUAL NEW CLUBS CUMULATIVE



GOALS AND ACTUAL MEMBERS CUMULATIVE



DROPPED CLUBS: 11	366 CLUBS OF 696 ADDED 1 OR MORE NEW MEMBERS	<u>GENDER DISTRIBUTION</u>	
		MALE	10,028 (63.45%)
<u>DROPPED MEMBERS</u>	<a href="#">CLICK HERE FOR CUMULATIVE MEMBERSHIP DATA</a>	FEMALE	5,776 (36.55%)
		NON BINARY	0 (0.00%)
		PREFER NOT TO ANSWER	1 (0.01%)
		TOTAL FAMILY UNIT MEMBERS	2,942
DECEASED	168	FAMILY MEMBERS PAYING HALF DUES	1,521
CLUB CANCELLED	9		
OTHER	1,124		
<b>TOTAL</b>	<b>1,301</b>		